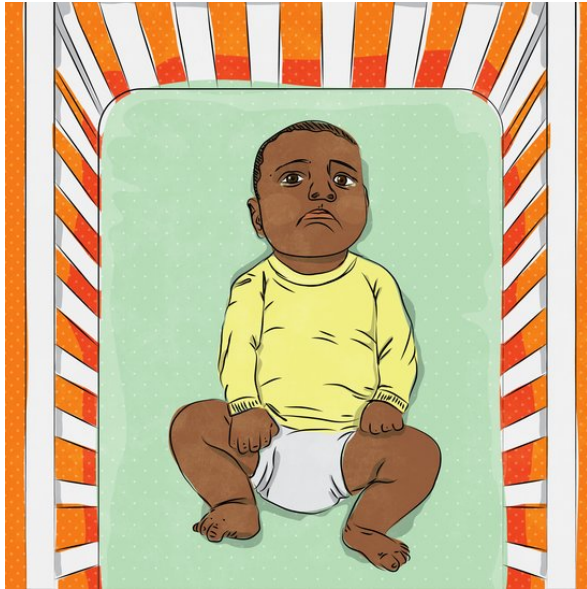




What is wrong child? / Mtoto, shida ni nini?

Ursula Nafula

English and Kiswahili

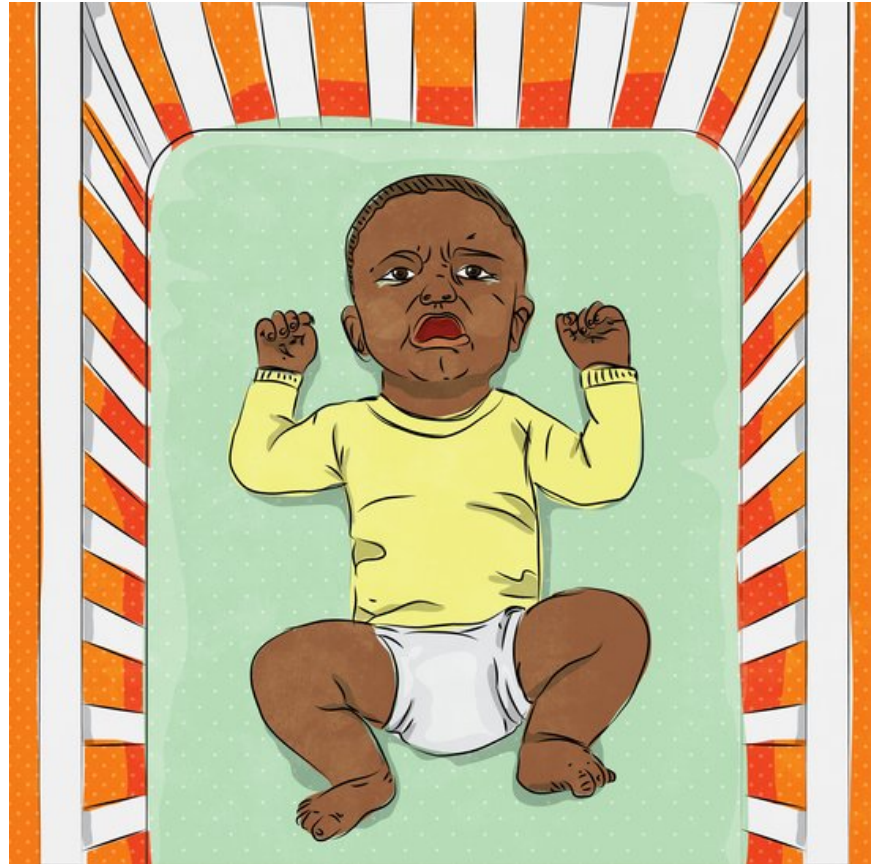


This is Matende.

Huyu ni Matende.

Matende cried all the time.

Matende alilia kila wakati.





When his mother fed him,
Matende cried.

Mamake alipomnyweshwa
maziwa, Matende alilia.

When Matende was put down to rest, he still cried.

Matende alipowekwa
kupumzika, bado alilia.





When his mother changed his nappies, Matende continued to cry.

Mamake alipobadilisha pampa, Matende aliendelea kulia.

When his mother carried
him on her shoulder,
Matende cried more.

Mamake alipombeba
begani, Matende alilia
zaidi.





When he fell asleep, Matende looked like he would start to cry again.

Alipopatwa na usingizi, Matende alionekana kuwa angeenza kulia tena.

Matende's mother looked
at her son.

She did not know what was
wrong with him.

Mamake Matende
alimwangalia mwanawe.
Hakujua kilichomsumbua.



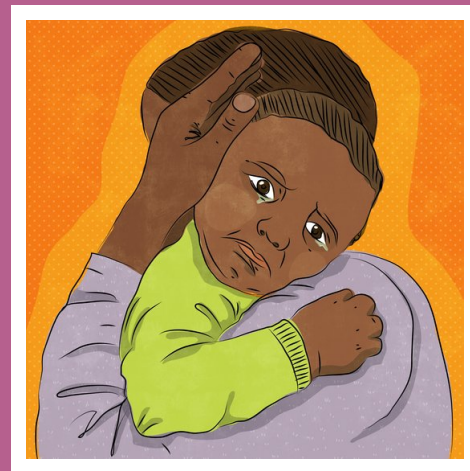
What is wrong child? / Mtoto, shida ni nini?

Writer: Ursula Nafula

Illustration: Wiehan de Jager

Adapted By: Ursula Nafula

Language: English and Kiswahili



© African Storybook Initiative, 2016



This work is licensed under a Creative Commons Attribution
(CC-BY 4.0) Version 4.0 International Licence

Disclaimer: You are free to download, copy, translate or adapt this story and use the illustrations as long as you attribute or credit the original author/s and illustrator/s.

Saide 
South African Institute
for Distance Education

www.africanstorybook.org
A Saide Initiative